

# VERSADYNE<sup>TM</sup> TOOLCARRIER

## Model 3K

surface friendly  
versatile  
easy-to-use  
powerful  
loader/tool carrier



Photos may show optional equipment



VersaDyne Model 3K with grapple



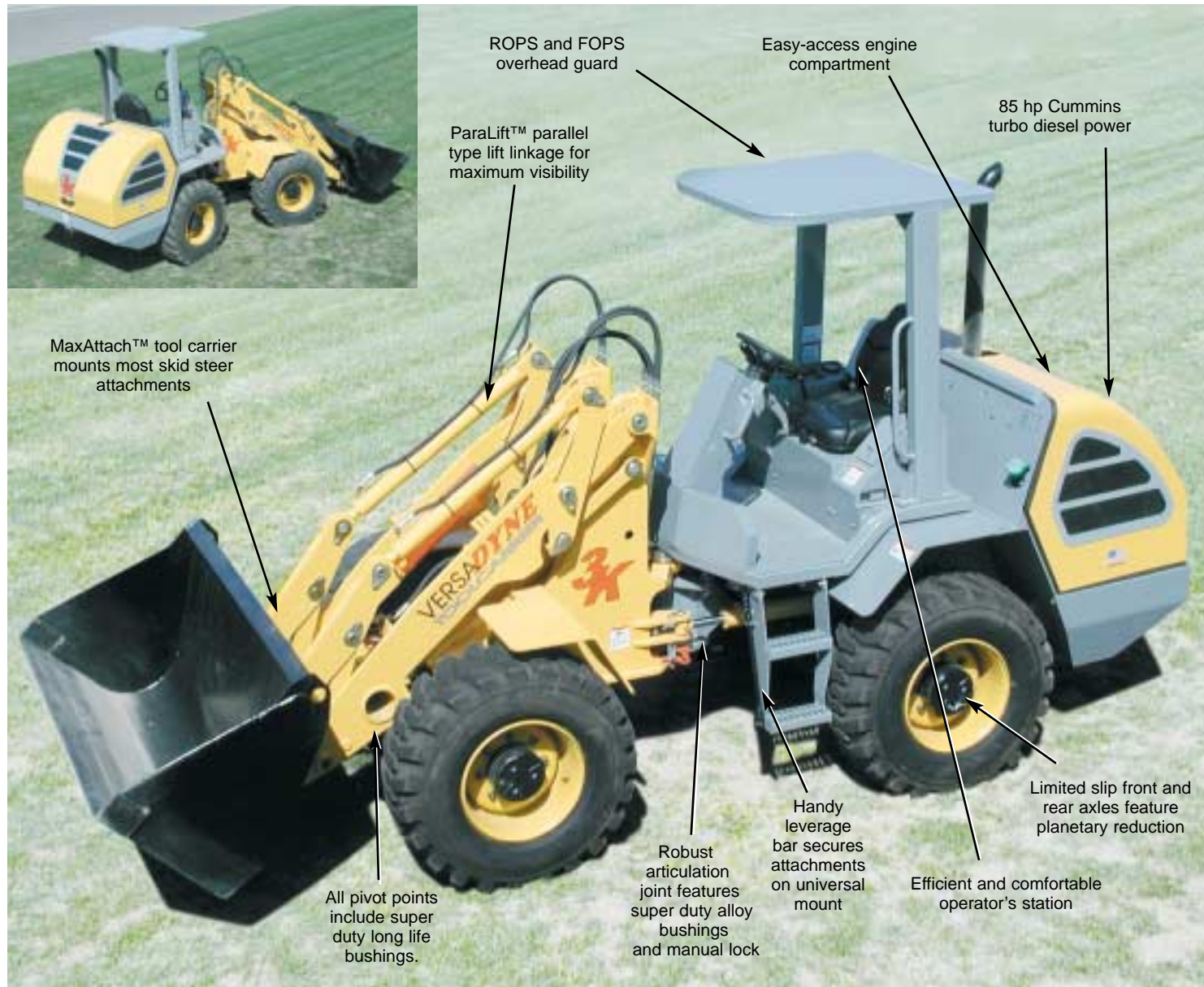
VersaDyne Model 3K with tree saw

**NMC-WOLLARD**

Made in the U.S.A. by the Loader Division of NMC-WOLLARD, Inc.



# GET THE MOST VALUE FOR YOUR EQUIPMENT DOLLAR



- Totally new utility size articulated loader/tool carrier
- Parallel lift linkage — uncompromised center visibility
- Individual travel speed and auxiliary flow control
- Planetary reduction axles reduce driveline stress
- MaxAttach™ tool carrier — universal compatibility
- Easy access 85 hp Cummins turbo diesel standard
- 2-speed hydraulic motor with auto downshift
- Super duty articulation joint with sealed alloy bushing

- Efficient rear axle with integrated transfer case, 2-speed hydraulic drive motor and oscillation joint
- Rugged, efficient side-by-side coolant/hydraulics radiator
- 45% limited slip differentials for turf operation
- Sealed, wet type service and park brakes
- ROPS/FOPS certified overhead structure
- CAD designed and computer stress tested
- And much more...



## SEE WHAT YOU'RE DOING

Working visibility: VersaDyne ParaLift™ parallel type loader linkage provides exceptional center visibility and keeps load level throughout the lift cycle. Ideal for fork tines and other attachments where open center visibility is essential to safe and efficient operation. VersaDyne is the only compact utility size loader/carrier with parallel lift loader linkage.

The ParaLift loader system features alloy bushings and urethane seals for long life and dependability.





# COMFORTABLE OPERATOR'S STATION WITH "FEATHERTOUCH™" PILOT VALVE CONTROL

Comfortable operator's station: Designed for operator ease and protection, VersaDyne features a roomy operator's station with 4-point rubber mounted vibration isolation, suspension seat, full gauges, wrist rest, and FeatherTouch pilot valve control of primary joy stick.

ROPS and FOPS certified: Overhead structure is certified for both rollover and falling object protection. Enclosed cab optional.

2 modes of auxiliary control: — On-off buttons (1) on main joystick give "all-or-nothing" flow — ideal for grapple jaws and other "on-off" attachments. Auxiliary control valve (2) regulates flow proportional to operator hand movement. Operator may "feather" attachments for position or operation. Simple forward motion locks auxiliary valve and sends full flow to the attachment for hands-off operation.

Easy control: FeatherTouch hydraulic system allows low pressure (450 psi) control of the 3,000 psi main hydraulic circuit — allows smooth, precise control of bucket and attachments.

RPM/GPM gauge (3): Indicates flow rate at variable rpm rates. This VersaDyne exclusive lets operators set efficient flow rates for a variety of attachments independent of vehicle speed. State-of-the-art hydraulic system includes a tandem pump, a common reservoir and totally separate propulsion and attachment flow — a must for efficient operation of brooms, snowblowers, mowers and other on-the-go attachments.



VersaDyne Model 3K with mower



VersaDyne Model 3K with grapple



VersaDyne Model 3K with log grapple



VersaDyne Model 3K with bucket



# RUGGED POWER TRAIN AND FRAME = FIELD DEPENDABILITY

**Powerful Engine:** 85 hp Cummins turbo diesel is standard. This transverse mounted power plant gives VersaDyne Model 3K up to 50% more power and torque compared to most competitive “utility” size units. The engine and hydrostatic drive pump are transverse mounted for easy access and serviceability with “hi-lift” fiberglass hood.

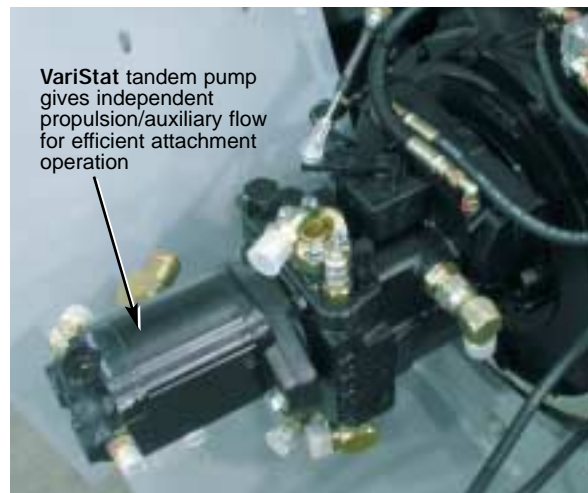
**Dependable driveline:** Short run hydrostatics from the engine provide power to the 2-speed auto shift hydraulic motor at integrated transfer case/rear axle. Heavy duty driveshaft from rear axle provides simple mechanical power to the front axle. Axles are 45% limited slip for combined traction and anti-skid turnability. Both axles feature outboard planetary reduction — places torque amplification at the wheels and reduces driveline stress.

**Efficient hydrostatics:** An engine driven tandem pump powers the driveline and VariStat™ auxiliary hydraulic circuits — allows operator to run attachments at peak efficiency while adjusting ground speed to conditions. 0-22 gpm auxiliary circuit provides ample flow to high horsepower attachments.

**Side-by-side radiator:** An integrated split radiator cools both engine and hydraulic oil. Efficient cooling design allows VersaDyne to operate high horsepower attachments in high ambient temperatures. Easy to clean, too.



Industrial rated side-by-side radiator/hydraulic oil cooler.



VariStat tandem pump gives independent propulsion/auxiliary flow for efficient attachment operation

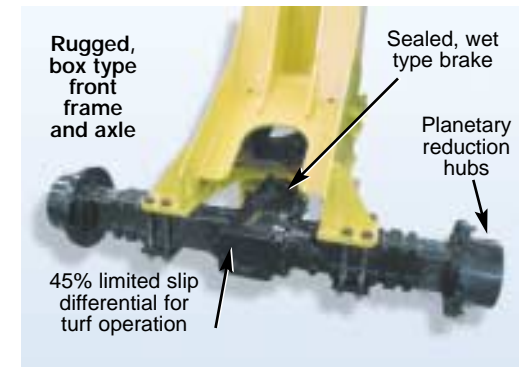


Cummins 85 hp turbocharged diesel power

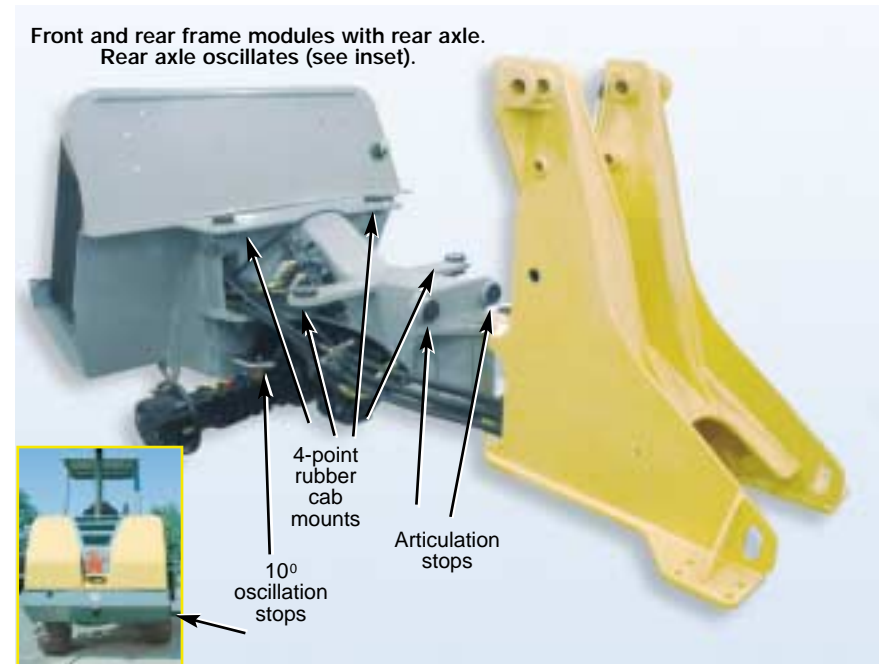
**Rugged frame:** Frames are wire welded plate steel for rigidity and long life. Box style front frame supports lift mechanism. Rear frame is a transitional backbone type — allows location of valves and other components outside the frame for easy access and maintenance. Accessible fuel tank is inside the rear frame for protection.

**Axles:** Front and rear axles feature stress reducing planetary reduction and 45% limited slip differentials for turf operation. Service and park brakes are sealed, wet type. Service brakes are manual, foot operated. Park brake actuates via console mounted switch.

**Robust articulation joint:** Super-duty, alloy bushing type features urethane seals for isolation from work environment. Articulation area features frame-mounted rubber stops (protects steering cylinder).

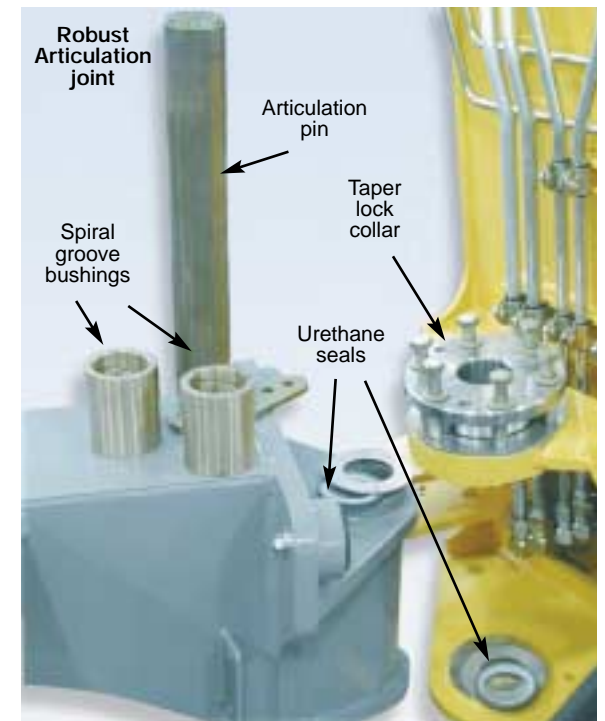


Rugged, box type front frame and axle  
Sealed, wet type brake  
Planetary reduction hubs  
45% limited slip differential for turf operation



Front and rear frame modules with rear axle. Rear axle oscillates (see inset).

4-point rubber cab mounts  
10° oscillation stops  
Articulation stops



Robust Articulation joint  
Articulation pin  
Spiral groove bushings  
Urethane seals  
Taper lock collar



VersaDyne Model 3K with mower



VersaDyne Model 3K with digger



VersaDyne Model 3K with nursery jaws



VersaDyne Model 3K with nursery jaws



**Operating:**

Weight.....	10,700 lbs.
Rated standard bucket capacity/width .....	1.0 yds <sup>3</sup> /74 in.
Rated light material bucket capacity/width.....	1.6 yds <sup>3</sup> /74 in.
Rated fertilizer material bucket capacity/width.....	1.9 yds <sup>3</sup> /74 in.
Bucket breakout force (SAE).....	8,000 lbs.
Straight tipping capacity.....	7,200 lbs.
Articulated tipping capacity.....	6,020 lbs.
Operating capacity (SAE).....	3,010 lbs.
Raise time (SAE).....	5.5 sec.
Lower time (SAE).....	3.7 sec.
Dump time (SAE).....	1.7 sec.
Travel speed (Low).....	5.1 mph
Travel speed (High).....	13.6 mph
Drawbar pull (Max. low gear).....	7,900 lbs.
Gradeability (High gear).....	25%
Gradeability (Low gear).....	55%
Articulation angle.....	+/- 40°

**Engine:**

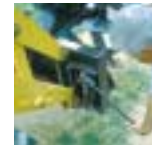
Cummins diesel, turbocharged, 85 hp

**Hydraulics:**

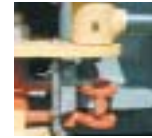
Hydraulic tank capacity.....	15 gal.
Propulsion hydraulic system pressure.....	5,800 psi
Auxiliary hydraulic system pressure.....	3,000 psi
Pilot (control) system pressure.....	450 psi

**Standard features:**

- 85 hp Cummins turbo diesel engine
- Hydrostatic over mechanical drive
- Integrated axle, transfer case
- 45% limited slip differentials
- VariStat independent hydrostatic drive/auxiliary hydraulics
- Pilot valve attachment control
- High visibility parallel lift linkage
- Planetary reduction axles
- Robust articulation joint
- Articulation joint lock
- Ignition key loader safety interlock
- Joystick control with armrest
- Backbone frame design
- Wet disc brake system
- 2-speed auto downshift
- Locking gas cap
- Tool box



Leverage bar



Art. joint lock



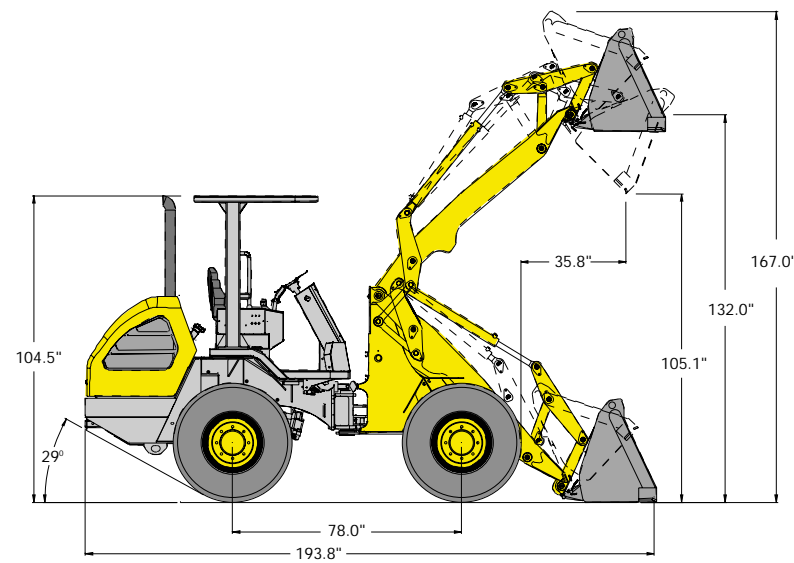
Locking gas cap

**Optional features:**

- Front and rear counter weights
- Deluxe cab
- Attachments including grapple buckets, forks and a variety of universal attachments
- Front and rear work lights



Versa grapple



Short run hydrostatics from engine to integrated rear axle/transfer case. Easy care mechanical drive to planetary reduction hubs.

